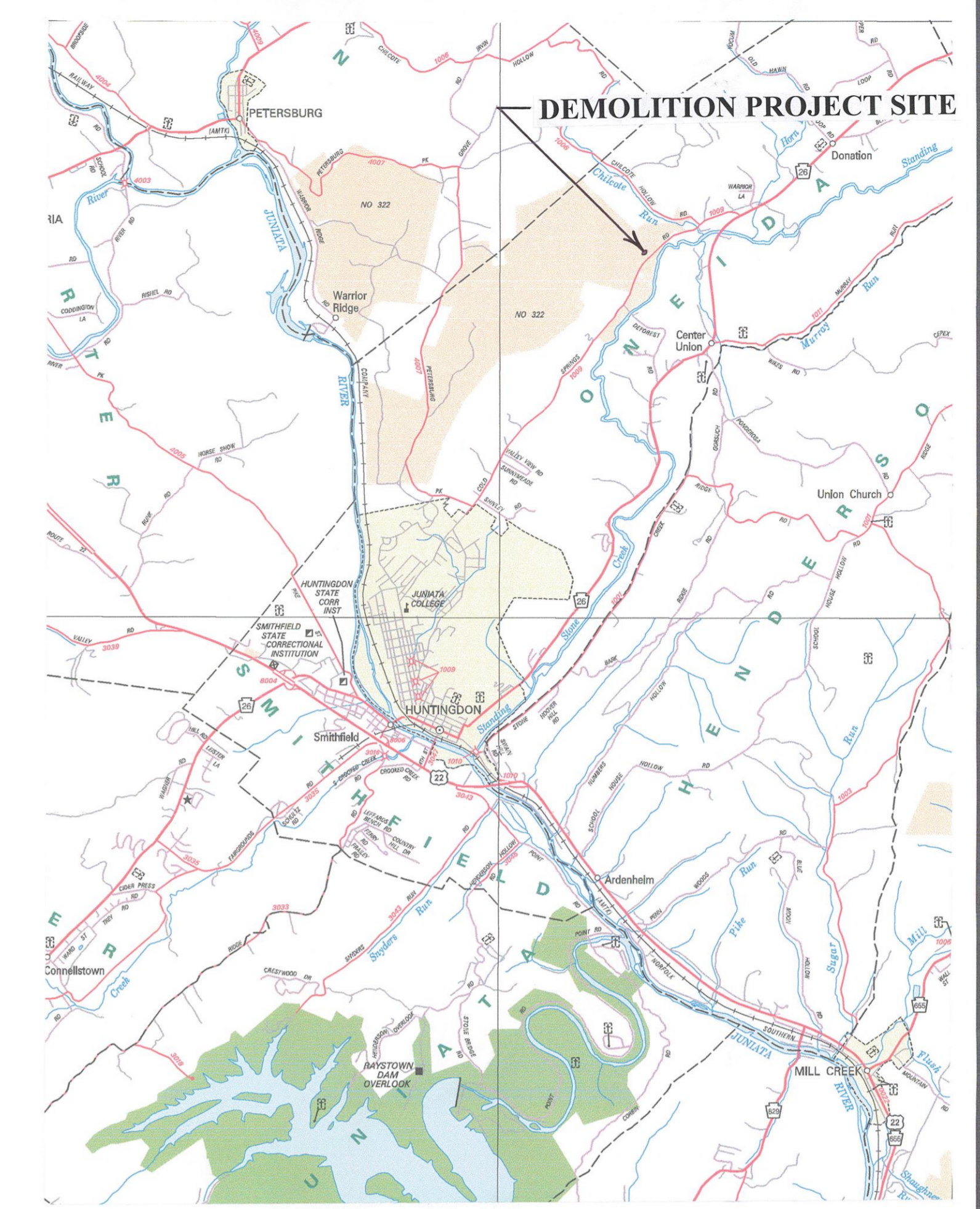


SITE PLAN

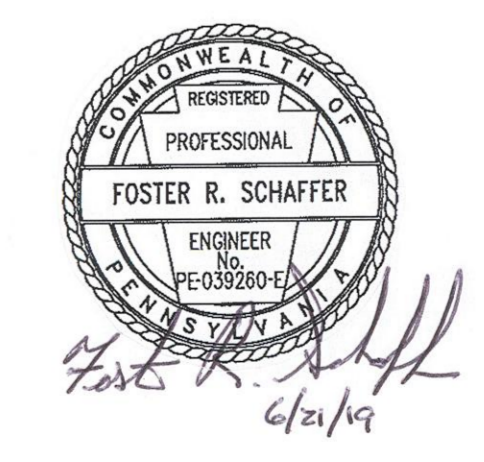
Approx. Scale 1-inch = 40-feet



LOCATION MAP

SCOPE OF PROJECT

1. Demolish and remove four buildings from the site on SGL #322. These buildings include a 1-1/2 story brick / wood frame house with basement, a 1-story frame garage, a frame barn and a frame corn crib. Burning or blasting is not permitted.
2. The foundations of the buildings must be removed to at least 12-inches below finished grade. Backfill the voids left by foundation removal up to finished grade with soil from the site. The basement walls of the house are to be removed to at least 12-inches below finished grade. Fill the basement with broken concrete and masonry and provide at least 12-inches of earth cover.
3. Remove the concrete footings and walls around the barn. Broken concrete and masonry can be used to fill the house basement. Extra broken concrete and masonry must be disposed of off-site according to DEP regulations.
4. Remove the paved driveway adjacent to the house. Dispose of the macadam off-site according to DEP regulations.
5. The electric service to the buildings will be disconnected by the PGC. Telephone and cable connections will also be disconnected by the PGC.
6. Plug the existing well according to the project specifications.
7. Pump out the septic system and fill the tank according to the project specifications.
8. Remove and properly dispose of all interior items, trash and debris in all four buildings at the site.
9. The Contractor is allowed to salvage the building components and any other materials to offset the costs of the project.
10. All building components, contents, trash and litter must be removed from the site. Debris and trash must be disposed of at a DEP approved landfill.
11. The disturbed areas must be seeded and mulched to comply with E&S requirements.



PENNSYLVANIA GAME COMMISSION		
STATE GAME LANDS #322	ONEIDA TWP.	HUNTINGDON CO.
DEMOLITION OF LANEY HOUSE AND BARN		
LOCATION MAP, SITE PLAN, DETAILS AND NOTES		
REVISIONS	PROJECT NO.	PAC-322-19-1
▲	DRAWN BY:	SS
▲	DATE:	6/21/19
▲	SHEET NO.	1 OF 2